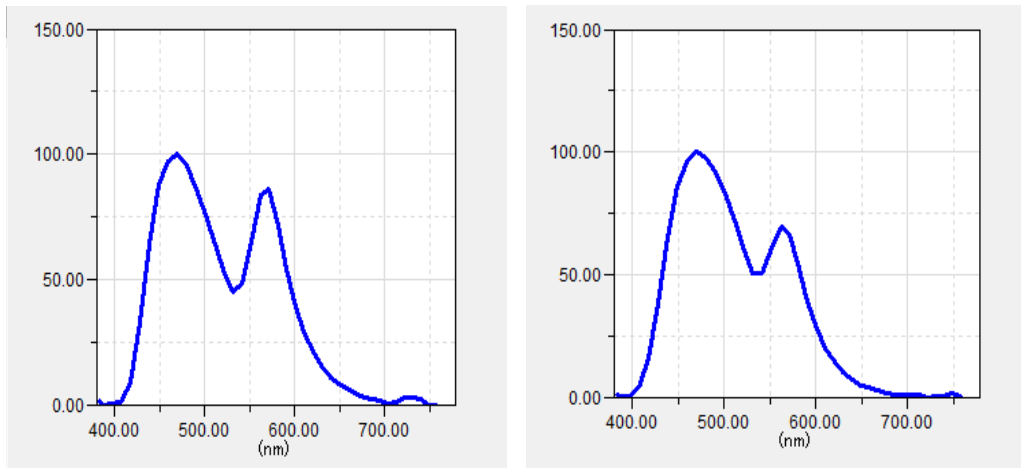


Parallel Electrode

About our Electroluminescent Panel (EL Panel): To make a white panel, manufacturers add a pink fluorescent dye to blue-green phosphor making the panel appear pink when “off” and more or less white when “on”. EL panels can have an acceptable white appearance when a graphic printed on white film is placed on the panel. However; some white areas in a graphic overlay can have a pink cast, this is caused by light reflecting off the graphic back onto the EL panel. For a brighter, longer lasting light source with a more neutral color consider an edge-lit LED panel.

White Electroluminescent Panel



With white graphic placed over EL panel

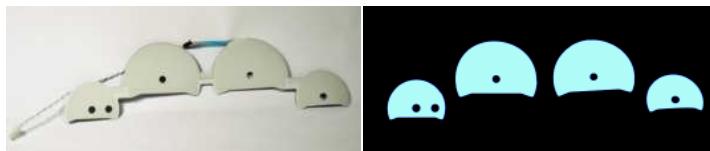
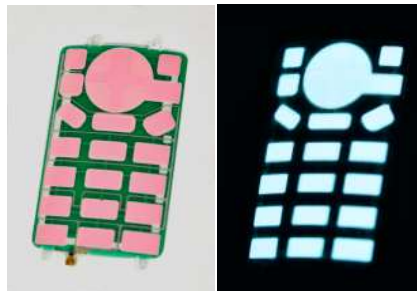
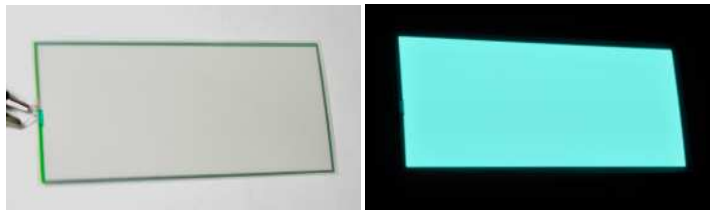
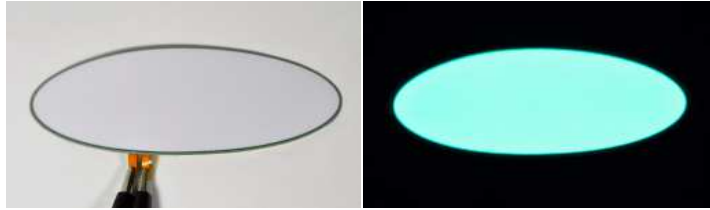
No graphic placed over EL panel

Description:	
Voltage	Parallel Electrode Electroluminescent panels have a recommended working voltage of ~100-volts @ ~600Hz.
Weight	4oz per square foot
Stock Sizes	A2 16.60 x 23.60-inches, white A3 12.50 x 17.25-inches, white DIY, 8.50 x 14.25-inches, white A4 8.00 x 12.00-inches, white 6.00 x 6.00-inches, white 2.40 x 3.95-inches, white 1.50 x 4.00-inches, Blue-Green Custom size, shape and colors are available
Colors	White, blue-green
Dimming	Yes
UL	No
Operating Temperature	-13 ~ + 158°F
Estimated Half Life	5,000-10,000-hours
Brightness	~100cd/m ²
Application	Indoor

Practical Application

Custom Designs

Custom designs require a CAD file in the DWG format.



Limited Warranty

Knema, LLC., dba LuminousFilm (hereinafter 'Company'), provides the following limited warranty for LED lighting, Electroluminescent (EL) products and accessories purchased from Company by any Individual, Distributor, or OEM (hereinafter 'Purchaser'). This limited warranty applies as follows to new LED and EL Products purchased by Purchasers in the United States or Canada, which are accompanied by this written warranty.

Subject to the exclusions contained below, Company warrants its lighting products and accessories ("Products"), which are sold to Purchaser for the purpose of commercial and/or residential lighting uses, to be free from defects in materials and workmanship under normal usage for the period(s) stated below unless otherwise stated in product-specific documentation as longer or shorter term.

Electroluminescent Panels, 120-days

Flexible LED Strips, 1-year

Electroluminescent Inverters, 1-year

LED Edge-lit panels [with or without flip-open frame], 3-years

LED Modules Premium [Cree LEDs] manufactured by US Solid State, LLC., 7-years

LED Modules Economy [non Cree LEDs] manufactured by US Solid State, LLC., 3-years

Power Supplies, manufacturers warranty

Accessories, 90-days

EXCLUSIONS

Normal Wear, Periodic Maintenance:

Repair and replacement of parts due to normal wear and tear are excluded from coverage.

Abuse & Misuse:

Defects or damage that result from: (a) improper operation, improper installation, storage, misuse or abuse, accident or neglect, to the product resulting from misuse; (b) contact with liquid, water, rain, extreme humidity, or dirt or the like, or extreme heat, or other extreme environmental conditions.

There is no warranty, expressed or implied, as to fitness of any product for a particular purpose, nor for any certain level or type of performance in any particular environment or application. Warranty coverage is limited to the sale price of the product, regardless of consequential or inconsequential damages that may be incurred.

GENERAL TERMS

Replacement Policy for Defective Products:

The Company will replace (either brand new or factory reconditioned) or repair defective products, upon our approved inspection of the defective product [in the case of LED lighting products: 10% defective LEDs in the unit]. Knema, LLC., reserves the right to deliver a similar (equivalent) type of product, if the type of the original product is no longer available at the time of complaint. The repair, replacement, or additional delivery of the product neither renews nor extends the period of the Limited Warranty. The replaced product will become the property of the Company.

Limited Warranty Claim:

The Company will repair or replace the defective product at the Company's discretion. Company reserves the right to examine any products and/or accessories to determine the cause of failure and patterns of usage. The date of the purchase and installation must be verified to validate the elapsed operating hours if a warranty claim is made. If product life is not validated, the product date code will be used to establish elapsed time based on Company's estimate of usage. Some states do not allow the exclusion or limitation of incidental or consequential damages, so the above limitation or exclusion may not apply to you. This warranty gives you specific legal rights and you may also have other rights which vary from state to state. Warranty coverage does not include original or return freight costs. If warranty service is needed, contact Knema, LLC., 7288 Greenwood Road, Shreveport, Louisiana 71119 USA. You will receive instructions on how to ship the Product(s), at your expense, to the Company. To obtain the benefits of this warranty service, you must include a copy of your receipt, bill of sale or other comparable proof of purchase.